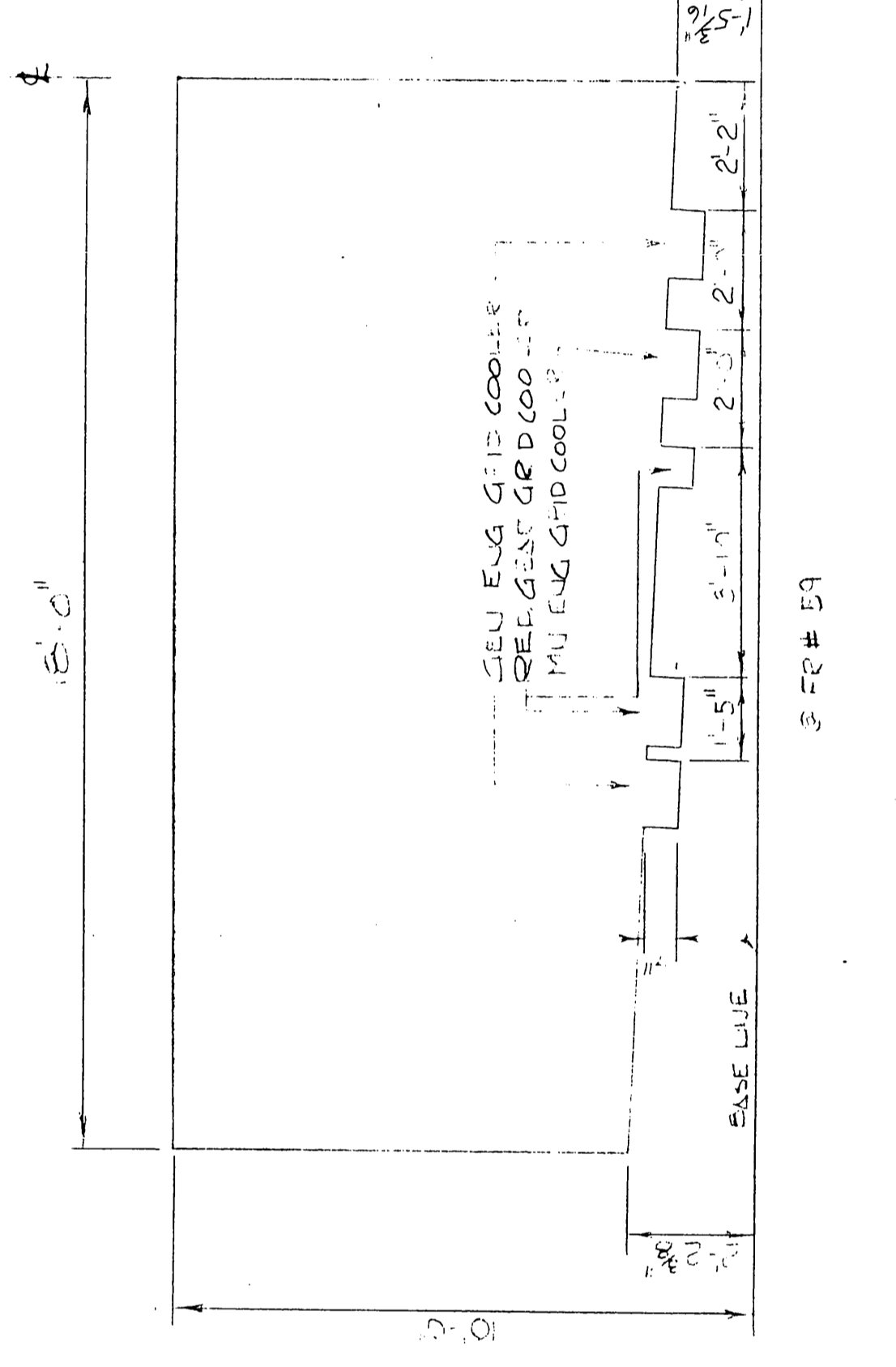
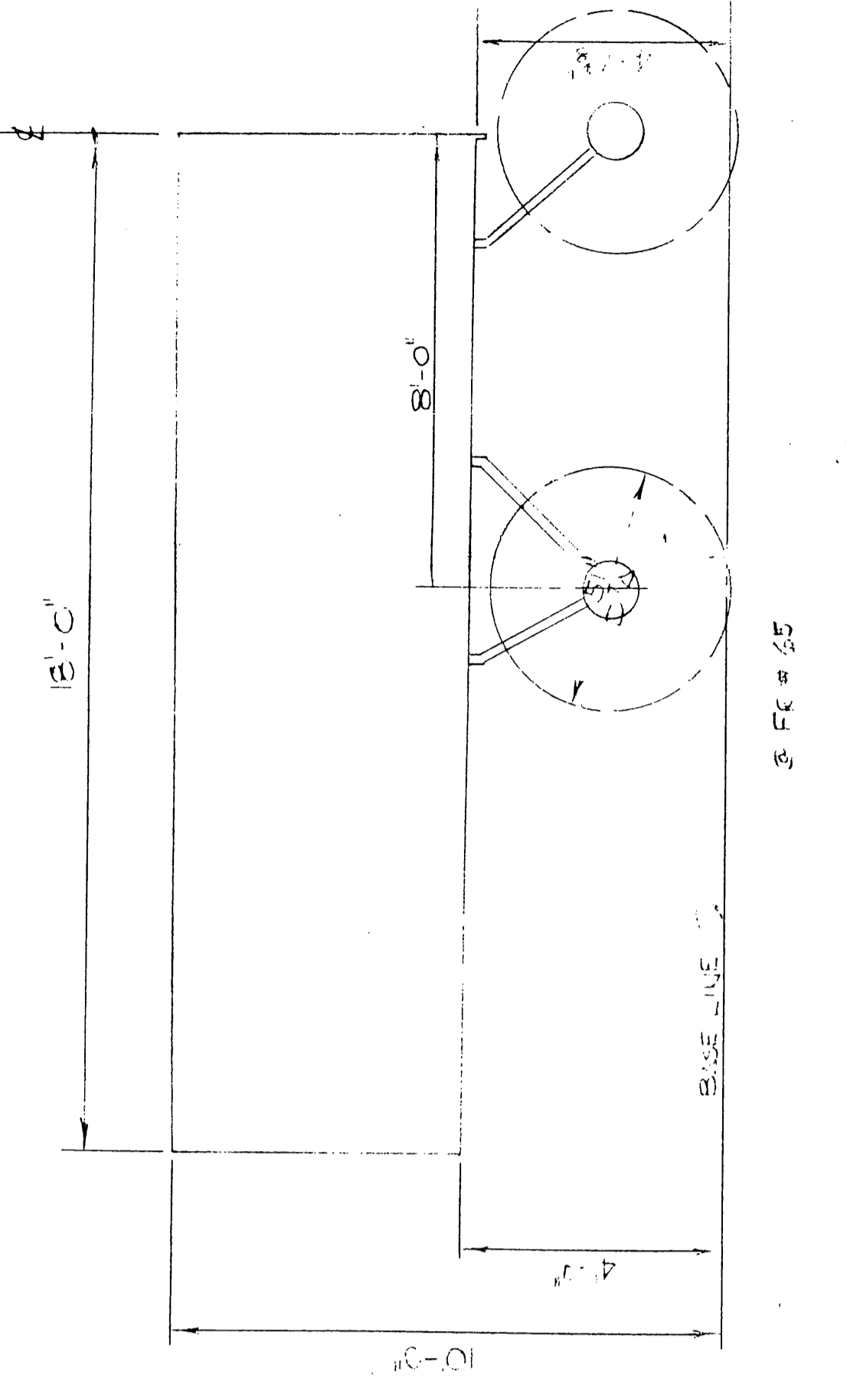


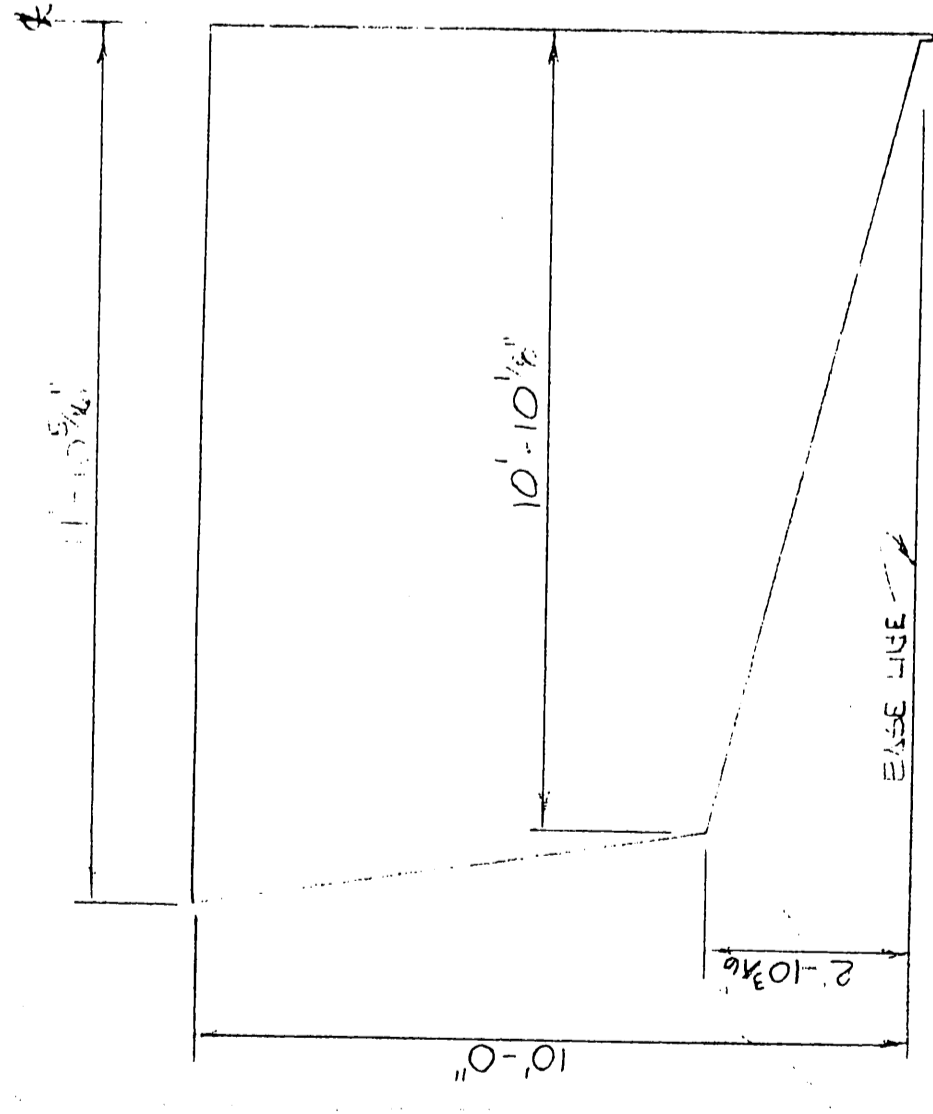
3 FR # 22



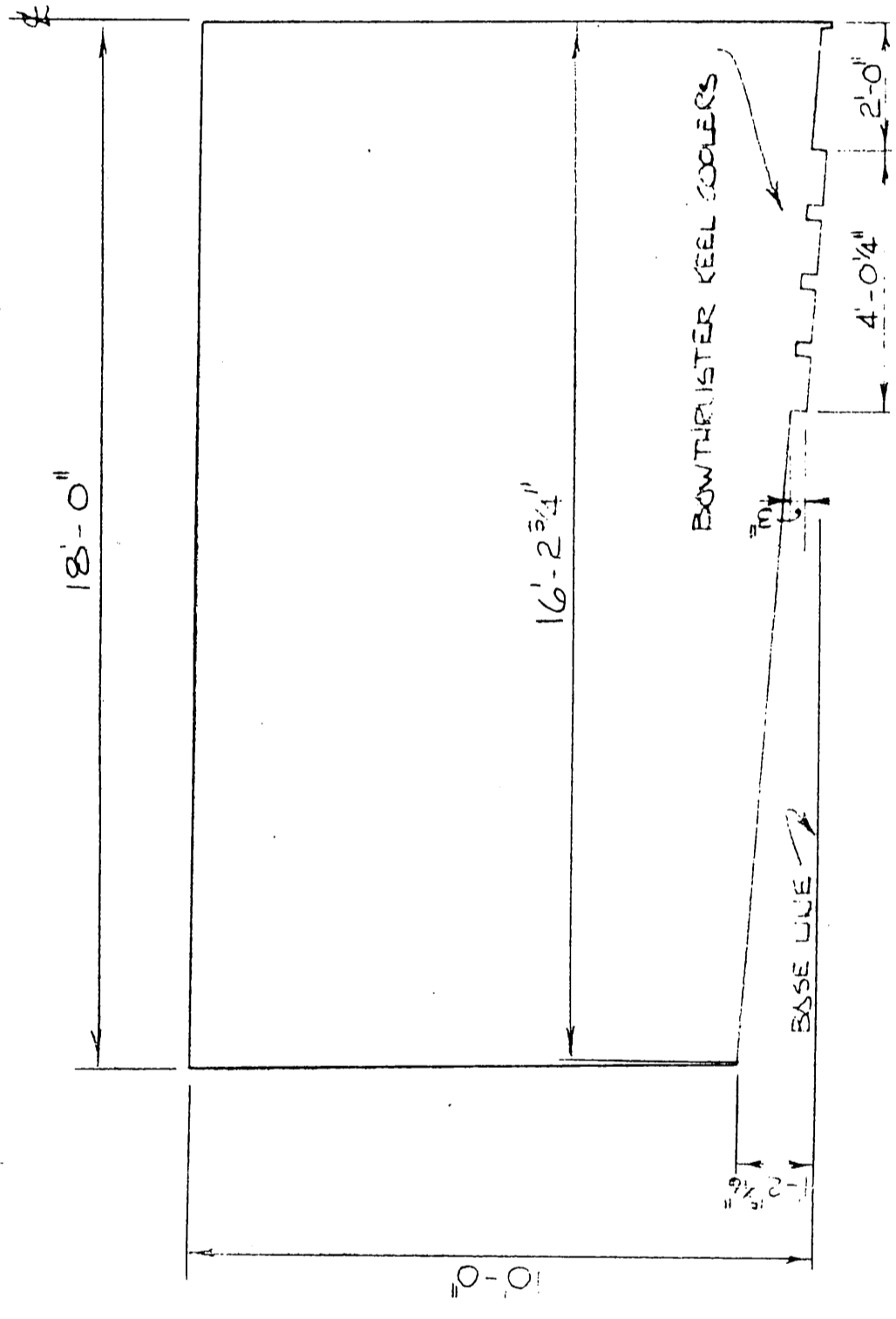
3 FR # 29



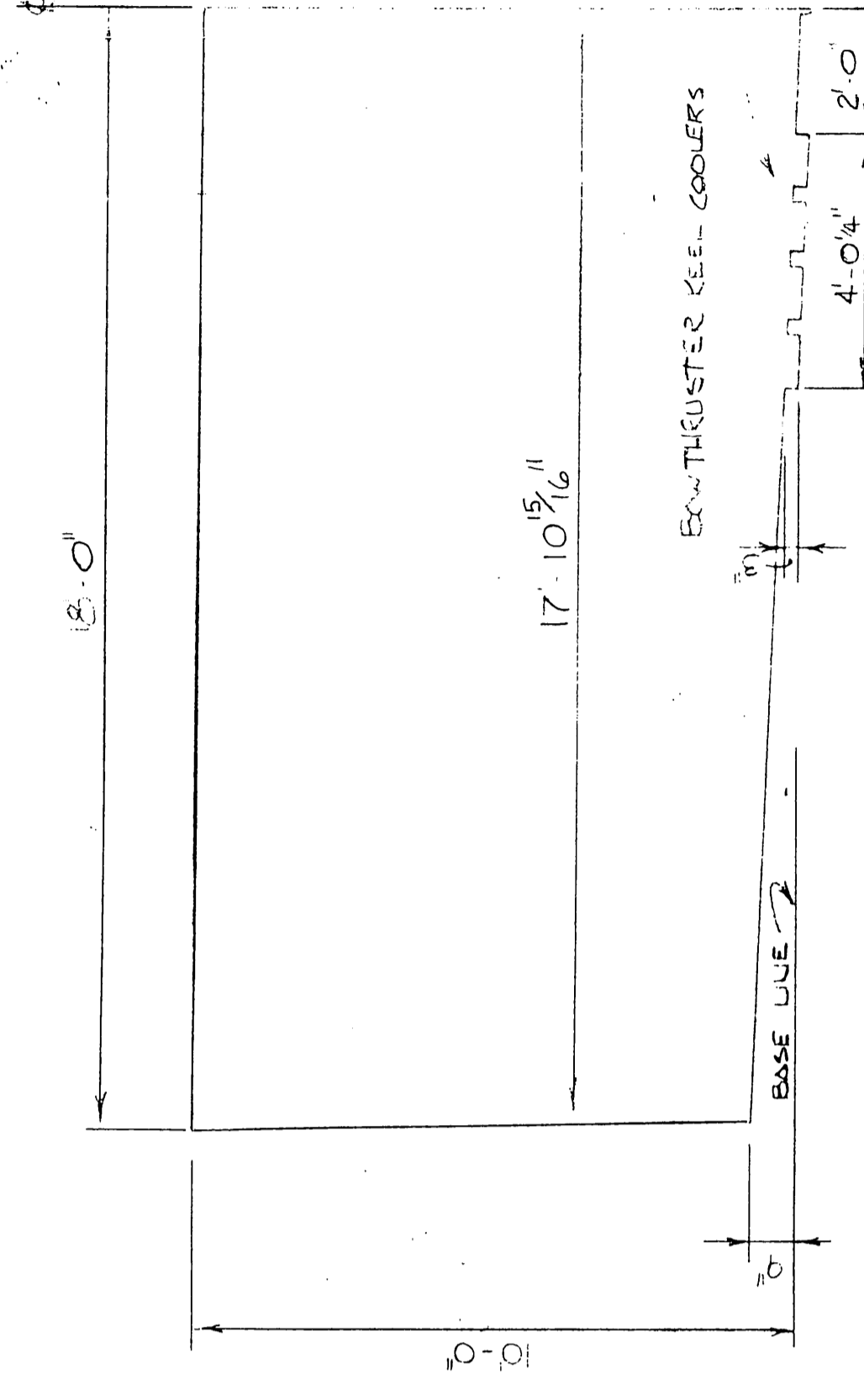
3 FR # 25



3 FR # 7



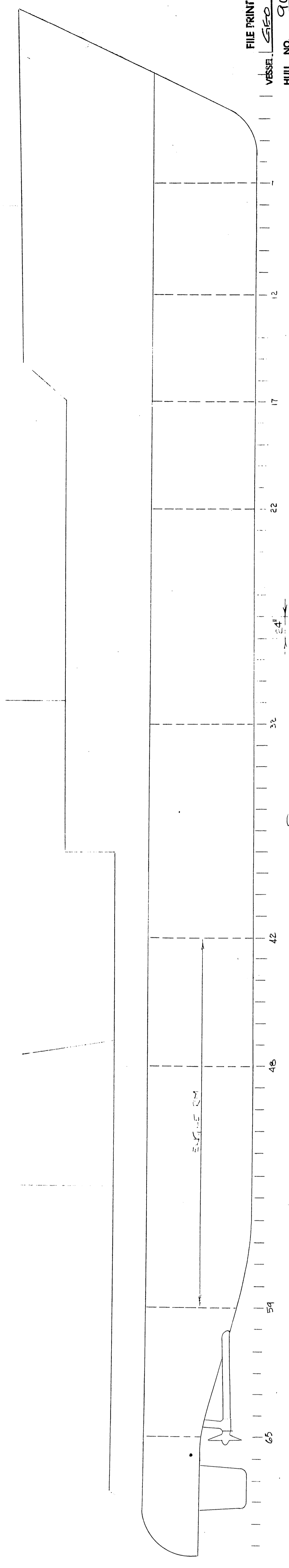
3 FR # 12



3 FR # 17

HALF BREADTHS

SCALE: 3/8" = 1'-0"



PROFILE

SCALE: 3/8" = 1'-0"

FILE PRINT
VESSEL: 5200 TUG
HULL NO. 90
DATE: 5-23-83

TOLERANCE ON FRACTIONAL DIMENSIONS:		USED ON:	
IN.	LESS OR MORE SPECIFIED	WALL THICKNESS	BY
1/16"	±0.005"	AS LISTED	AS LISTED
1/8"	±0.010"	2" & OVER	2" & OVER
3/16"	±0.015"	3" & OVER	3" & OVER
1/2"	±0.020"	4" & OVER	4" & OVER
3/4"	±0.025"	5" & OVER	5" & OVER
1"	±0.030"	6" & OVER	6" & OVER
1 1/4"	±0.035"	7" & OVER	7" & OVER
1 1/2"	±0.040"	8" & OVER	8" & OVER
2"	±0.045"	9" & OVER	9" & OVER
2 1/2"	±0.050"	10" & OVER	10" & OVER
3"	±0.055"	11" & OVER	11" & OVER
3 1/2"	±0.060"	12" & OVER	12" & OVER
4"	±0.065"	13" & OVER	13" & OVER
4 1/2"	±0.070"	14" & OVER	14" & OVER
5"	±0.075"	15" & OVER	15" & OVER
5 1/2"	±0.080"	16" & OVER	16" & OVER
6"	±0.085"	17" & OVER	17" & OVER
6 1/2"	±0.090"	18" & OVER	18" & OVER
7"	±0.095"	19" & OVER	19" & OVER
7 1/2"	±0.100"	20" & OVER	20" & OVER
8"	±0.105"	21" & OVER	21" & OVER
8 1/2"	±0.110"	22" & OVER	22" & OVER
9"	±0.115"	23" & OVER	23" & OVER
9 1/2"	±0.120"	24" & OVER	24" & OVER
10"	±0.125"	25" & OVER	25" & OVER
10 1/2"	±0.130"	26" & OVER	26" & OVER
11"	±0.135"	27" & OVER	27" & OVER
11 1/2"	±0.140"	28" & OVER	28" & OVER
12"	±0.145"	29" & OVER	29" & OVER
12 1/2"	±0.150"	30" & OVER	30" & OVER
13"	±0.155"	31" & OVER	31" & OVER
13 1/2"	±0.160"	32" & OVER	32" & OVER
14"	±0.165"	33" & OVER	33" & OVER
14 1/2"	±0.170"	34" & OVER	34" & OVER
15"	±0.175"	35" & OVER	35" & OVER
15 1/2"	±0.180"	36" & OVER	36" & OVER
16"	±0.185"	37" & OVER	37" & OVER
16 1/2"	±0.190"	38" & OVER	38" & OVER
17"	±0.195"	39" & OVER	39" & OVER
17 1/2"	±0.200"	40" & OVER	40" & OVER
18"	±0.205"	41" & OVER	41" & OVER
18 1/2"	±0.210"	42" & OVER	42" & OVER
19"	±0.215"	43" & OVER	43" & OVER
19 1/2"	±0.220"	44" & OVER	44" & OVER
20"	±0.225"	45" & OVER	45" & OVER
20 1/2"	±0.230"	46" & OVER	46" & OVER
21"	±0.235"	47" & OVER	47" & OVER
21 1/2"	±0.240"	48" & OVER	48" & OVER
22"	±0.245"	49" & OVER	49" & OVER
22 1/2"	±0.250"	50" & OVER	50" & OVER
23"	±0.255"	51" & OVER	51" & OVER
23 1/2"	±0.260"	52" & OVER	52" & OVER
24"	±0.265"	53" & OVER	53" & OVER
24 1/2"	±0.270"	54" & OVER	54" & OVER
25"	±0.275"	55" & OVER	55" & OVER
25 1/2"	±0.280"	56" & OVER	56" & OVER
26"	±0.285"	57" & OVER	57" & OVER
26 1/2"	±0.290"	58" & OVER	58" & OVER
27"	±0.295"	59" & OVER	59" & OVER
27 1/2"	±0.300"	60" & OVER	60" & OVER
28"	±0.305"	61" & OVER	61" & OVER
28 1/2"	±0.310"	62" & OVER	62" & OVER
29"	±0.315"	63" & OVER	63" & OVER
29 1/2"	±0.320"	64" & OVER	64" & OVER
30"	±0.325"	65" & OVER	65" & OVER
30 1/2"	±0.330"	66" & OVER	66" & OVER

MISSISSIPPI MARINE
MMO